

## Function Fittings - Flow Control Regulators

**7010**

**Flow Control Regulator** - With Recessed Adjustment Screw, BSPP & M5 Thread

ØD	C	P/N
4	M5x0,8	7010 04 19
4	G1/8	7010 04 10
6	M5x0,8	7010 06 19
6	G1/8	7010 06 10
6	G1/4	7010 06 13
8	G1/8	7010 08 10
8	G1/4	7010 08 13
8	G3/8	7010 08 17
10	G1/4	7010 10 13
10	G3/8	7010 10 17
10	G1/2	7010 10 21
12	G3/8	7010 12 17
12	G1/2	7010 12 21


**7660**

**Flow Control Regulator** - Miniature BSPP & Metric Thread

ØD	C	P/N
4	M5x0,8	7660 04 19
4	G1/8	7660 04 10
6	M5x0,8	7660 06 19
6	G1/8	7660 06 10
6	G1/4	7660 06 13
8	G1/8	7660 08 10
8	G1/4	7660 08 13


**7040**

**Flow Control Regulator** - Compact, Swivel Outlet Type, BSPP Thread

ØD	C	P/N
6	G1/8	7060 06 10
6	G1/4	7060 06 13
8	G1/8	7060 08 10
8	G1/4	7060 08 13
8	G3/8	7060 08 17
10	G1/4	7060 10 13
10	G3/8	7060 10 17
12	G3/8	7060 12 17
12	G1/2	7060 12 21


**7060**

**Flow Control Regulator** - Compact, BSPP Thread

ØD	C	P/N
4	G1/8	7060 04 10
6	G1/8	7060 06 10
6	G1/4	7060 06 13
8	G1/8	7060 08 10
8	G1/4	7060 08 13
8	G3/8	7060 08 17
10	G1/4	7060 10 13
10	G3/8	7060 10 17
12	G3/8	7060 12 17
12	G1/2	7060 12 21


**7669**

**Flow Control Regulator** - Miniature, BSPP & Metric Thread

ØD	C	P/N
4	M5x0,8	7669 04 19
4	G1/8	7669 04 10
6	M5x0,8	7669 06 19
6	G1/8	7669 06 10
6	G1/4	7669 06 13
8	G1/8	7669 08 10
8	G1/4	7669 08 13


**7776**

**Flow Control Regulator** - In-Line With Push-In Connections, Panel Mountable

ØD	P/N
4	7776 04 00
6	7776 06 00
8	7776 08 00
10	7776 10 00
12	7776 12 00


**7770**

**Flow Control Regulator** - In-Line With Push-In Connection

ØD	P/N
4	7770 04 00
6	7770 06 00
8	7770 08 00
10	7770 10 00
12	7770 12 00


**7100**

**Flow Control Regulator** - Metal Type - Compact Push-In Connection, BSPP Thread

ØD	C	P/N
4	G1/8	7100 04 10
6	G1/8	7100 06 10
6	G1/4	7100 06 13
8	G1/8	7100 08 10
8	G1/4	7100 08 13
8	G3/8	7100 08 17
10	G1/4	7100 10 13
10	G3/8	7100 10 17
12	G3/8	7100 12 17
12	G1/2	7100 12 21
14	G1/2	7100 14 21


**7110**

**Flow Control Regulator** - Metal Type - Compact With Threaded Fitting, BSPP Thread

C	P/N
G1/8	7110 10 10
G1/4	7110 13 13
G3/8	7110 17 17
G1/2	7110 21 21


**7130**

**Flow Control Regulator** - Metal Type - With Push-In Connection, BSPP Recessed Adjustment Screw

ØD	C	P/N
4	M5x0,8	7130 04 19
4	G1/8	7130 04 10
6	M5x0,8	7130 06 19
6	G1/8	7130 06 10
6	G1/4	7130 06 13
8	G1/8	7130 08 10
8	G1/4	7130 08 13
8	G3/8	7130 08 17


**7762**

**Flow Control Regulator** - Metal Type - With Brass Compression fitting & Ext. Adjustment Screw, BSPP Thread

ØD	C	P/N
8	G1/8	*7762 08 10
10	G1/4	7762 10 13
14	G3/8	7762 14 17
18	G1/2	7762 18 21



\*7762 08 10 - Comes with Adjustment Knurl

**7810**

**Flow Control Regulator** - **Stainless Steel** With Threaded Fitting, BSPP & Metric, Recessed Adjustment Screw

C1 - C2	P/N
G1/8	7810 10 10
G1/4	7810 13 13
G3/8	7810 17 17
G1/2	7810 21 21


**7812**

**Flow Control Regulator** - **Stainless Steel** With Threaded Fitting, BSPP & Metric, Recessed Adjustment Screw

C1 - C2	P/N
G1/8	7812 10 10
G1/4	7812 13 13
G3/8	7812 17 17
G1/2	7812 21 21


**08850**

**Flow Control Regulator** - Uni-Directional

ØD	P/N
M5	08850 00 001
1/8	08850 00 002
1/4	08850 00 003
3/8	08850 00 004
1/2	08850 00 005


**08860**

**Flow Control Regulator** - Bi-Directional

ØD	P/N
M5	08860 00 001
1/8	08860 00 002
1/4	08860 00 003
3/8	08860 00 004
1/2	08860 00 005


**900**

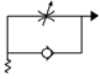
**Flow Control Regulator** - Anodised Aluminium, One-Way

ØD	P/N
1/8	901
1/4	902
1/2	904



## 57901

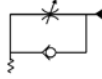
**Flow Control Regulator -**  
Orienting For Cylinders -  
Universal Short



ØD	C	P/N
4	M5	57901 00 002
4	1/8	57901 00 003
5	M5	57901 00 004
5	1/8	57901 00 005
5	1/4	57901 00 006
6	M5	57901 00 007
6	1/8	57901 00 008
6	1/4	57901 00 009
8	1/8	57901 00 010
8	1/4	57901 00 011
8	3/8	57901 00 016
10	1/4	57901 00 017
10	3/8	57901 00 012
12	3/8	57901 00 013
12	1/2	57901 00 014
14	1/2	57901 00 015

## 57910

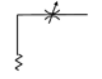
**Flow Control Regulator -**  
Orienting For Valves - Universal  
Short



ØD	C	P/N
4	M5	57910 00 002
4	1/8	57910 00 003
5	M5	57910 00 004
5	1/8	57910 00 005
5	1/4	57910 00 006
6	M5	57910 00 007
6	1/8	57910 00 008
6	1/4	57910 00 009
8	1/8	57910 00 010
8	1/4	57910 00 011
8	3/8	57910 00 016
10	1/4	57910 00 017
10	3/8	57910 00 012
12	3/8	57910 00 013
12	1/2	57910 00 014
14	1/2	57910 00 015

## 57920

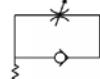
**Flow Control Regulator -**  
Orienting Bi-Directional -  
Universal Short



ØD	C	P/N
4	M5	57920 00 002
4	1/8	57920 00 003
5	M5	57920 00 004
5	1/8	57920 00 005
5	1/4	57920 00 006
6	M5	57920 00 007
6	1/8	57920 00 008
6	1/4	57920 00 009
8	1/8	57920 00 010
8	1/4	57920 00 011
8	3/8	57920 00 016
10	1/4	57920 00 017
10	3/8	57920 00 012
12	3/8	57920 00 013
12	1/2	57920 00 014
14	1/2	57920 00 015

## 57905

**Flow Control Regulator -**  
Orienting For Cylinders -  
Universal Short



ØD	C	P/N
4	M5	57905 00 002
4	1/8	57905 00 003
5	M5	57905 00 004
5	1/8	57905 00 005
5	1/4	57905 00 006
6	M5	57905 00 007
6	1/8	57905 00 008
6	1/4	57905 00 009
8	1/8	57905 00 010
8	1/4	57905 00 011
8	3/8	57905 00 016
10	1/4	57905 00 017
10	3/8	57905 00 012
12	3/8	57905 00 013
12	1/2	57905 00 014
14	1/2	57905 00 015

## 57915

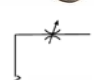
**Flow Control Regulator -**  
Orienting For Valves - Universal  
Short



ØD	C	P/N
4	M5	57915 00 002
4	1/8	57915 00 003
5	M5	57915 00 004
5	1/8	57915 00 005
5	1/4	57915 00 006
6	M5	57915 00 007
6	1/8	57915 00 008
6	1/4	57915 00 009
8	1/8	57915 00 010
8	1/4	57915 00 011
8	3/8	57915 00 016
10	1/4	57915 00 017
10	3/8	57915 00 012
12	3/8	57915 00 013
12	1/2	57915 00 014
14	1/2	57915 00 015

## 57925

**Flow Control Regulator -**  
Orienting Bi-Directional -  
Universal Short



ØD	C	P/N
4	M5	57925 00 002
4	1/8	57925 00 003
5	M5	57925 00 004
5	1/8	57925 00 005
5	1/4	57925 00 006
6	M5	57925 00 007
6	1/8	57925 00 008
6	1/4	57925 00 009
8	1/8	57925 00 010
8	1/4	57925 00 011
8	3/8	57925 00 016
10	1/4	57925 00 017
10	3/8	57925 00 012
12	3/8	57925 00 013
12	1/2	57925 00 014
14	1/2	57925 00 015

## 08870

**Logic Element - In-Line, 'OR' Type**



ØD	P/N
1/8	TV18
1/4	08870 00 001

## 08872

**Logic Element - In-Line 'AND' Type**



ØD	P/N
1/8	08872 00 001

### Function Fittings - Axial Valves

## 4202 / VIP



**Nickel-Plated Brass**

Legris & OMAL Axial Valve - Normally Open OR Normally Closed,  
Double Female, BSPP, NBR/FKM/EPDM Seals, Sizes "3/8 to 2"

ØD	P/N
G3/8	4202 10 17 20
G1/2	4202 15 21 20
G3/4	4202 20 27 20
G1	4202 25 34 20
G1 1/4	4202 32 42 20
G1 1/2	4202 40 49 20
G2	4202 50 48 20



### Function Fittings - Pneumatic Actuator

## DAN



**Aluminium Alloy/Stainless Steel**

OMAL Double Acting ('DAN') Pneumatic Actuator, FKM/NBR Seals,  
Torque 8Nm to 8000Nm, Rotation Angle 90°,  
Temp.: from 0°C to +80°C  
(from -20°C with dry air only.)

Air supply: 5,6 bar; max. 84 bar.  
Operating media: compressed  
filtered air, not necessarily  
lubricated. In case of lubricated  
air, either non detergent oil or  
NBR compatible oil must be used.



\* Please ask for further information