

# 58 SERIES

The MAC 58 series is a 3-way balanced spool valve piloted by our 200 series (which means this large 3-way valve can also be ordered with the 200 series hazardous location version as a pilot - giving it the same standard). This is an extremely versatile valve:

**1:** It can be converted for use in vacuum. **2:** It can be changed from a normally closed function to a normally open function by simply rotating a function plate between the pilot and main valve bodies. **3:** It can also be converted to a remote air operated valve by removing the solenoid pilot assembly - just to name a few. For more information regarding certifications (such as UL, CSA, RoHS and CE) please ask our team at Mac Valves Pacific.

**Stock Part Number:** 58D-16-501JC

Function	Port size	Flow (Max)	Pressure Range	Individual Mounting
3/2 & 2/2 NO-NC	1"-1 1/4"-1 1/2"	26.0 Cv	Ext. Vac. to 150PSI Int. 25 to 150PSI	Inline

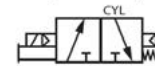


58 SERIES

### OPERATIONAL BENEFITS

- Balanced spool, immune to variations of pressure.
- Short stroke with high flow.
- Large spool area provides maximum high flow.
- Checked accumulator provides pilot & spring with consistent air.
- Powerful return force thanks to the combination of mechanical and air springs.
- Bonded spool with minimum friction, shifting in a glass-like finished bore.
- Wiping effect eliminates sticking.
- Pilot valve with balanced poppet, high flow, short and consistent response times.

N/C pilot - NC spool



N/O pilot - N/C spool



## 58 SERIES

58 D - X X - XX X XX  
          1 2   3 4 5

### 1 - Valve Function

- Internal Pilot, N.C. Pilot, N.C. Main Spool
- Internal Pilot, N.O. Pilot, N.C. Main Spool
- External Pilot, N.C. Pilot, N.C. Main Spool
- External Pilot, N.O. Pilot, N.C. Main Spool
- Remote Air Pilot Operated, N.C. Main Spool
- Internal Pilot, N.C. Pilot, N.O. Main Spool
- External Pilot, N.C. Pilot, N.O. Main Spool
- Remote Air Pilot, N.O. Main Spool

### 2 - Port Size

- |               |               |
|---------------|---------------|
| 4 1" BSPP     | 5 1 1/4" BSPP |
| 6 1 1/2" BSPP |               |

### 3 - Voltage

AC Voltage	DC Voltage
11 120/60, 110/50	50 24VDC (6W)
22 24/50-60	55 12VDC (6W)
25 240/50	60 12VDC (8.5)
*Further Options Available	61 24VDC (8.5)

### 4 - Manual Indicator Lights

- |                    |                               |
|--------------------|-------------------------------|
| 0 No Operator      | 1 Non-Locking Recessed (Std.) |
| 2 Locking Recessed | 3 Non-Locking Extended        |
| 4 Locking Extended |                               |

### 5 - Enclosure

- |                          |                         |
|--------------------------|-------------------------|
| BA Grommet               | CA Conduit 1/2" NPS     |
| CC Conduit 1/2" NPT      | EA Hazardous Location** |
| JA Square Din - No Light | JC Din with Light       |

\*\* - Hazardous Location enclosure supplied with no operator only ("0").  
DC not available below 6 watts.

## 58 SERIES - Remote Air Pilot Operated Models

58 D - X X - RA  
          1 2

### 1 - Function

- Normally Closed
- Normally Open

### 2 - Port Size

- 1" BSPP
- 1 1/4" BSPP
- 1 1/2" BSPP

For "External Pilot", substitute "RA" for "RE" in part number

### Accessories

- |         |                               |
|---------|-------------------------------|
| R-59003 | Remote Air Pilot Block        |
| M-00012 | Explosion Proof Adapter Plate |

### Pilot Valve

- 250B - XX X XX

### Modifications

- |      |                              |
|------|------------------------------|
| 0309 | 58C Spool Position Indicator |
| 0523 | Contaminated Atmosphere      |
| 0575 | 58C Diverter                 |
| 0158 | Heavy Duty Spring            |